



MASTER LEDtube InstantFit HF T8



MAS LEDtube HF 600mm HO 8W830 T8

Philips MASTER LEDtube InstantFit T8 integrates a LED light source into a traditional fluorescent form factor. Its unique design creates a perfectly uniform visual appearance which cannot be distinguished from traditional fluorescent. Philips MASTER LEDtube InstantFit T8 is the ideal solution for customers who have higher light requirements and want to maximize value over lifetime. Full energy savings & longer lifetime result in attractive payback times and TCO benefits.

Warnings and Safety

- NOTES: The overall energy efficiency and light distribution of any installation that uses these lamps are determined by the design of the installation.

Product data

| General Information | |
|------------------------------------|--------------------|
| Cap-Base | G13 ROT |
| Nominal lifetime | 75,000 hour(s) |
| Switching Cycle | 50,000 |
| Lighting Technology | LED |
| Flux measurement reference | Sphere |
| Light Technical | |
| Color Code | 830 [CCT of 3000K] |
| Beam Angle (Nom) | 160 degree(s) |
| Luminous Flux | 1,000 lm |
| Color Designation | White (WH) |
| Correlated Color Temperature (Nom) | 3000 K |
| Luminous Efficacy (rated) (Nom) | 125 lm/W |
| Color Consistency | <6 |

| Color rendering index (CRI) | 80 |
|--|-----------------|
| LLMF At End Of Nominal Lifetime (Nom) | 70 % |
| Photobiological safety according to EN 62471 | RG0 |
| Operating and Electrical | |
| Line Frequency | 20000-120000 Hz |
| Input Frequency | 20000-120000 Hz |
| Power Consumption | 8 W |
| Lamp Current (Max) | 500 mA |
| Lamp Current (Min) | 150 mA |
| Starting Time (Nom) | 0.5 s |
| Warm-up time to 60% light | 0.5 s |
| Power Factor (Fraction) | 0.9 |
| Voltage (Nom) | 20-50 V |
| LED alternative to fluorescent lamp power | 18 W |

MASTER LEDtube InstantFit HF T8

| | |
|--|----|
| Inrush current at mains | - |
| Max. lamp no. on MCB B type 10A – Mains | - |
| Max. lamp no. on MCB B type 10A – EM ballast without Compensation Capacitor. | - |
| Max. lamp no. on MCB B type 10A – EM ballast with Compensation Capacitor. | - |
| Max. lamp no. on MCB B type 16A – Mains | - |
| Max. lamp no. on MCB B type 16A – EM ballast without Compensation Capacitor. | - |
| Max. lamp no. on MCB B type 16A – EM ballast with Compensation Capacitor. | - |
| Ballast Compatibility | HF |

Temperature

| | |
|----------------------|-------|
| T-Case Maximum (Nom) | 55 °C |
|----------------------|-------|

Controls and Dimming

| | |
|----------|----|
| Dimmable | No |
|----------|----|

Mechanical and Housing

| | |
|--------------------|----------|
| Bulb Finish | Frosted |
| Bulb Material | Plastic |
| Product Length | 600 mm |
| Bulb Shape | T8 |
| Net Weight (Piece) | 0.100 kg |

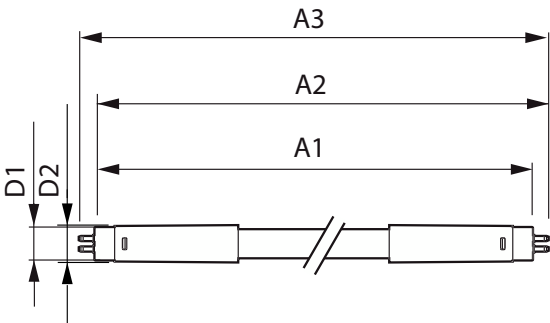
Approval and Application

| | |
|-------------------------------|--|
| Energy Efficiency Class | E |
| Energy Saving Product | Yes |
| Approval Marks | RoHS compliance CE marking KEMA Keur certificate ENEC certificate |
| Energy Consumption kWh/1000 h | 8 kWh |
| EPREL Registration Number | 1597256 |
| CE mark | Yes |
| EU RoHS compliant | Yes |
| Ambient temperature range | -20 °C to 45 °C |

Product Data

| | |
|---------------------------------|----------------------------------|
| Order product name | MAS LEDtube HF 600mm HO 8W830 T8 |
| Full product name | MAS LEDtube HF 600mm HO 8W830 T8 |
| Full product code | 871951446640100 |
| Order code | 929001393132 |
| Material Nr. (12NC) | 929001393132 |
| Numerator - Quantity Per Pack | 1 |
| EAN/UPC - Product/Case | 8719514466401 |
| Numerator - Packs per outer box | 20 |
| EAN/UPC - Case | 8719514466418 |

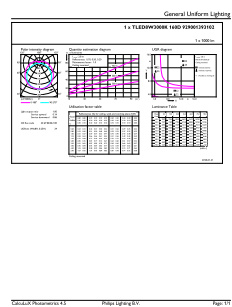
Dimensional drawing



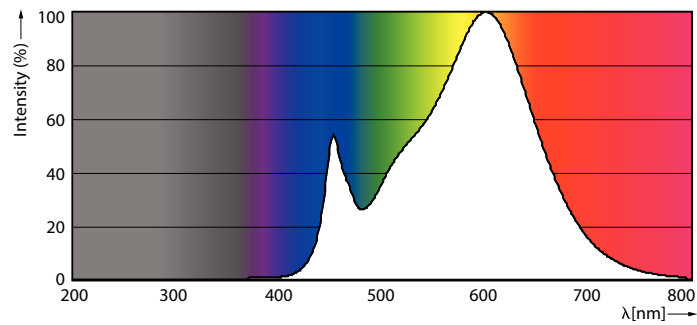
| Product | D1 | D2 | A1 | A2 | A3 |
|----------------------------------|---------|-------|----------|----------|----------|
| MAS LEDtube HF 600mm HO 8W830 T8 | 25.8 mm | 28 mm | 588.6 mm | 595.7 mm | 602.8 mm |

MASTER LEDtube InstantFit HF T8

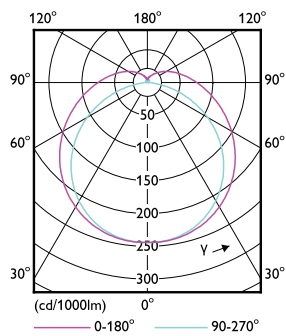
Photometric data



General uniform lighting - MAS LEDtube HF 600mm HO 8W830 T8

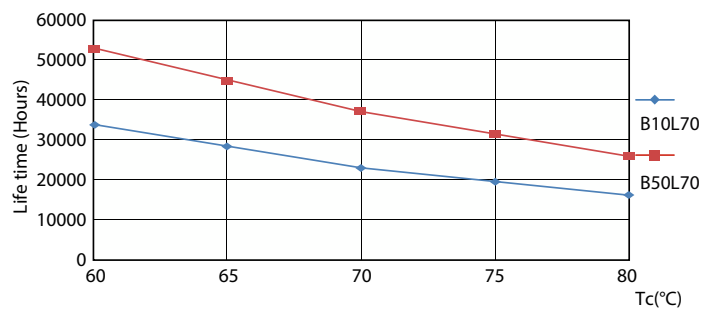


Spectral Power Distribution Colour - MAS LEDtube HF 600mm HO 8W830 T8

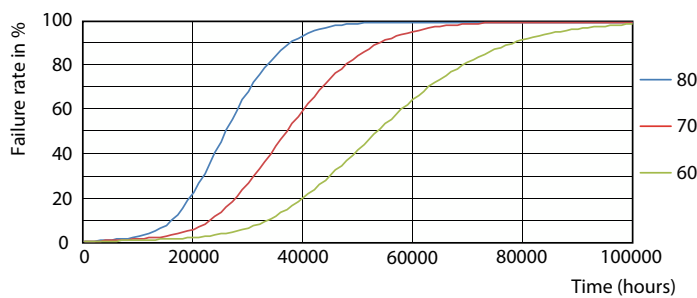


Light Distribution Diagram - MAS LEDtube HF 600mm HO 8W830 T8

Lifetime



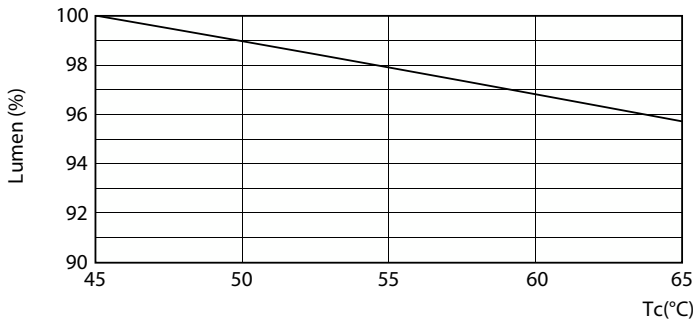
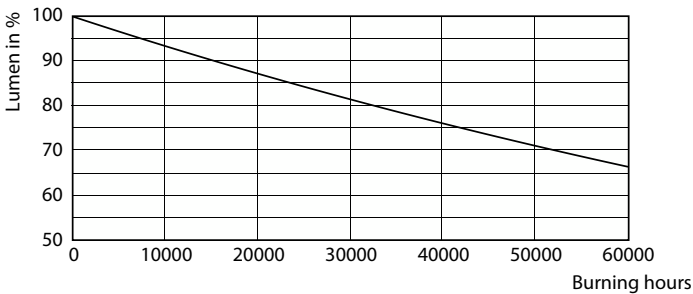
LifetimeVsTc



FailureRate

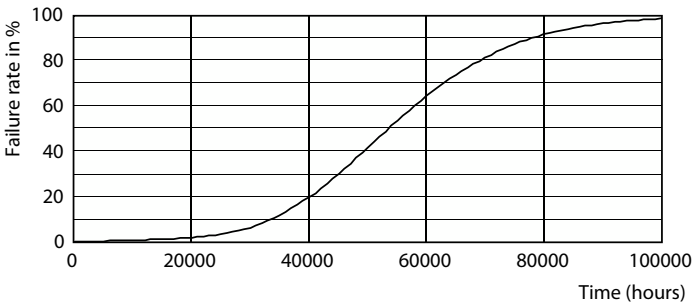
MASTER LEDtube InstantFit HF T8

Lifetime



Lumen Maintenance Diagram - MAS LEDtube HF 600mm HO 8W830 T8

Lumen Maintenance Diagram - MAS LEDtube HF 600mm HO 8W830 T8



Life Expectancy Diagram

