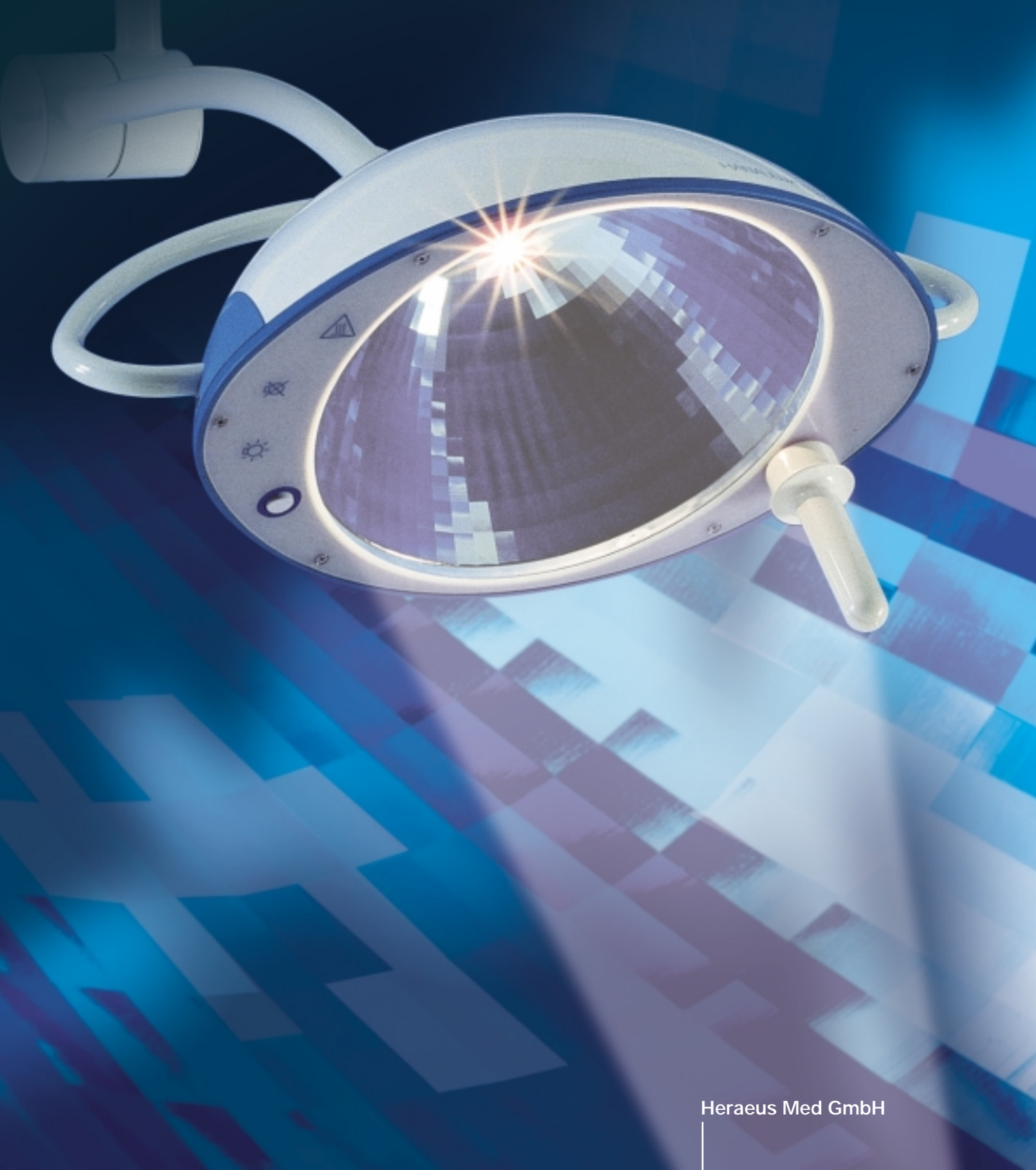

Heraeus

HANAULUX
blueLine® 80/30



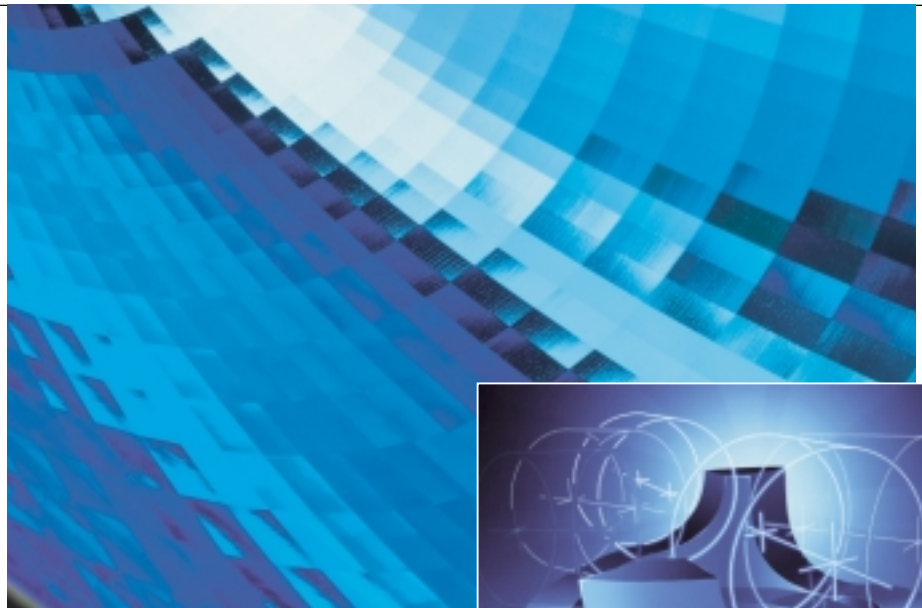
Perfection blueline®

Many copy we innovate. Because as pioneers in lighting technology, we know what we have to do: encourage our engineers to high achievements in pursuing technical advancement.

Setting new standards with the HANAULUX blue 80 and blue 30: high efficiency, optimum movement and powerful lightoutput.

Light versus shadow: a cascade of focus points.

The multi-faceted reflector focuses the light beam into a column of focalpoints on overlying levels which brightly illuminate the whole surgical area homogeneously. Re-focussing of the light is not necessary.



Unique: FacettoChrome

The multi-functional filter and reflector system with 1,500 facets and precision-coated metal reflector provides an absolutely precise, true-to-colour, neutral white light:

- natural perception of the colours thanks to a colour temperature of 4,300 Kelvin and a colour rendering index of 93
- integrated, two-stage interference filter creates cool light



Innovation: ergodisc

The revolution in balancing. The ergonomic counterbalance guarantees optimum movement while maintaining the highest level of stability.

Other highlights include:

- increased ease of operation
- perfect positioning
- compact, enclosed spring system
- aerodynamic design

Simple: replacement of the light bulb

The replacement of the light bulb takes only a few seconds – no tools, no calibration.



The HANAULUX blueline was awarded the IF Seal for outstanding industrial design by the international jury at the Hanover Industrial Design Forum 1996.



blue 30 S mobile –
30,000 lux

HANAULUX® blue 30 S/30

With many practical properties the HANAULUX blue 30 S/blue 30 models are an excellent addition to minor treatment rooms: mobile, hospital, wall or ceiling versions.



blue 30 S hospital – 30,000 lux with back-up battery

Strong detail: blue 30 model

- light intensity 30,000 lux
- integrated ON/OFF switch, easily accessible on the light head
- sterilizable handle
- compact
- stability and accurate positioning just where you want it
- counterbalance in spring joint
- smooth surface for perfect hygiene

blue 30 S ceiling version

- fully rotatable around the central axis
- optional two-stage interference filter for additional infrared filtering with all blue 30 S versions

Cost effective: blue 30 ceiling version

- can be rotated 310° around the central axis
- maximum vertical movement
- one-stage infra-red filtering



blue 30 ceiling – 30,000 lux



blue 30 wall – 30,000 lux

Mobile: blue 30 mobile/hospital

- space-saving, mobile – compact and easy to carry
- stable, tilt-proofed, asymmetric 5 foot stand and lockable double wheels

blue 30 mobile

- electronic transformer to stabilize voltage; transformer housing keeps the wires secure

blue 30 S hospital

- automatic switch-over to integrated back-up battery, maintenance-free
- operates for up to 2 hours in battery operated mode
- automatic charging



HANAULUX® blue 80 / blue 80 – 2 x 80,000 lux

The best ceiling combination. With amazing power of illumination with twice 80,000 lux. Fully rotatable, super-light handling, cool, neutral white light, natural colours.

New: combination with HANAUPORT®.

Advances in surgical techniques call for new solutions in the operating theatre. Our answer: HANAUPORT with support arm system Alpha 2000 or the Tandem version.



HANAUPORT with Tandem support arm system: Monitor / blue 80 / blue 80



HANAUPORT with support arm system Alpha 2000:
equipment carrier / blue 80 / blue 80



blue 80 / blue 30 –
80,000 / 30,000 lux



blue 80 ceiling –
80,000 lux

HANAULUX® blue 80

Whatever your specific requirements – different types of examinations and therapies, careful pre-OP and recovery procedures, surgery or labour-room – with HANAULUX blue 80 mobile, wall or ceiling-mounted versions as well as battery-operated hospital versions we always offer you the right answer.

Convincing: blue 80 models

- light intensity of 80,000 lux
- equipped with a two-stage interference filter for additional infra-red filtering
- automatic back-up system from primary to secondary light source
- integrated ON/OFF switch, easily accessible on the light head
- sterilizable handle
- fully rotatable around the central axis with accurate positioning just where it is required
- dust-free, enclosed, shock-resistant housing with smooth surface for perfect hygiene



blue 80 free-standing – 80,000 lux



blue 80 hospital – 80,000 lux with back-up battery

Mobile: blue 80 mobile/hospital

- fail-safe electronics
- space-saving, mobile - compact and easy to carry
- stable, tilt-proofed asymmetric 5 foot stand with lockable double wheels

Strong in detail: blue 80 Hospital

- automatic switch over to integrated back-up battery
- up to 3 hours battery-operated use
- automatic charging
- integrated warning system (LED, warning tone)

Data	blue 30/30 S	blue 80
Light intensity	30,000 lux	80,000 lux
Light field diameter	17 cm	18 cm
Working distance	70 –130 cm	70 –130 cm
Depth of working area with focused light	60 cm	60 cm
Diameter of the light outlet	20 cm	35 cm
Colour temperature	4300 Kelvin	4300 Kelvin
Colour rendering	93	93
Max. temperature increase at the surgical site	5°C ¹⁾	13°C
Max. temperature increase at surgeon's head	2°C	2°C
Luminous efficacy	250 lm/W ¹⁾	250 lm/W
Total UV-irradiance	120 W/m ²	320 W/m ²
Power consumption	50 W	150 W
Dimensions of the light unit	330 x 230 x 122 mm	500 x 370 x 200 mm
Weight of the light unit	1.8 kg	5.5 kg

¹⁾ with two-stage filtering

Length of service in battery mode
 with fully charged batteries:

blue 30 S hospital 2 hours
 blue 80 hospital 3 hours

Heraeus Med GmbH
 P.O. Box 15 64
 D-63405 Hanau · Germany
 Telephone +49-(0) 61 81-35-40 00
 Fax +49-(0) 61 81-35-25 56
 mailbox@heraeus-med.com
 www.heraeus-med.com

Heraeus Medical, Inc.
 6764 Preston Ave., Suite A
 Livermore CA 94550 · USA
 Telephone +1-800-2 27-83 72
 Fax +1-9 25-3 71-59 29
 info@heraeusmed.com
 www.heraeusmed.com

Heraeus Med, Singapore
 6 Harper Road #07-08
 Leong Huat Building · Singapore 369674
 Telephone +65-3 82 86 00
 Fax +65-2 84 99 74
 hanaulux@singnet.com.sg
 www.heraeus-med.com



DIN/ISO 9001
 Reg.No. 2503