



CorePro LED PLL



CorePro LED PLL EM/Mains 12W 830 4P

Philips CorePro LED PLL is the ideal uplamping solution for downlights & luminaires in a wide range of general lighting applications. It integrates a LED light source into a traditional fluorescent form factor to offer superb energy savings over a lifetime that's twice as long as fluorescent alternatives.

Product data

| General Information | |
|---------------------------------------|--------------------|
| Cap-Base | 2G11 [2G11] |
| Nominal lifetime | 30,000 hour(s) |
| Switching Cycle | 200,000 |
| Lighting Technology | LED |
| Flux measurement reference | Sphere |
| Light Technical | |
| Color Code | 830 [CCT of 3000K] |
| Beam Angle (Nom) | 160 degree(s) |
| Luminous Flux | 1,440 lumen |
| Color Designation | White (WH) |
| Correlated Color Temperature (Nom) | 3000 K |
| Luminous Efficacy (rated) (Nom) | 120 lm/W |
| Color Consistency | <6 |
| Color rendering index (CRI) | 80 |
| LLMF At End Of Nominal Lifetime (Nom) | 70 % |
| Operating and Electrical | |
| Line Frequency | 50 to 60 Hz |
| Input Frequency | 50 to 60 Hz |
| Power Consumption | 12 W |
| Lamp Current (Nom) | 60 mA |

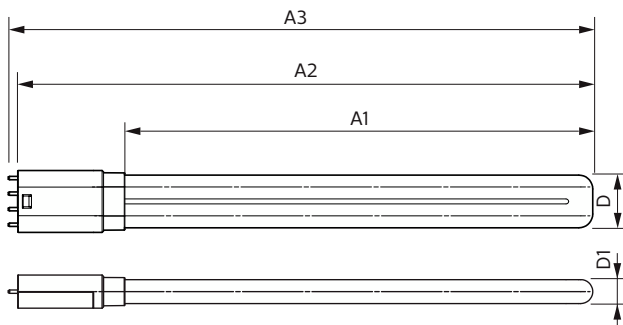
| Starting Time (Nom) | 0.5 s |
|---------------------------|--|
| Warm-up time to 60% light | 0.5 s |
| Power Factor (Fraction) | 0.9 |
| Voltage (Nom) | 220-240 V |
| Temperature | |
| Ambient temperature range | -20 °C to 45 °C |
| T-Case Maximum (Nom) | 70 °C |
| Controls and Dimming | |
| Dimmable | No |
| Mechanical and Housing | |
| Bulb Finish | Frosted |
| Bulb Material | Glass |
| Product Length | 300 mm |
| Bulb Shape | Tube, single-ended |
| Approval and Application | |
| Energy Efficiency Class | E |
| Energy Saving Product | Yes |
| Approval Marks | RoHS compliance TUV CE marking KEMA Keur certificate |

CorePro LED PLL

| | |
|-------------------------------|-------------------------------------|
| Energy Consumption kWh/1000 h | 12 kWh |
| EPREL Registration Number | 1370825 |
| EU RoHS compliant | Yes |
| Product Data | |
| Full product code | 872016915703300 |
| Order product name | CorePro LED PLL EM/Mains 12W 830 4P |
| Order code | 929003592402 |

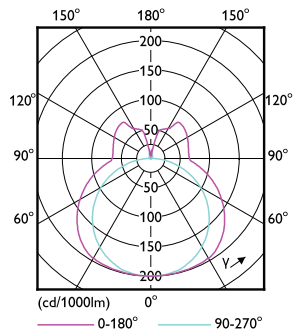
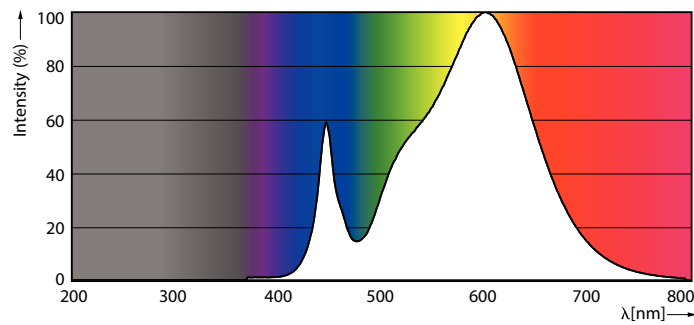
| | |
|---------------------------------|-------------------------------------|
| Numerator - Quantity Per Pack | 1 |
| Numerator - Packs per outer box | 10 |
| Material number (12NC) | 929003592402 |
| Full product name | CorePro LED PLL EM/Mains 12W 830 4P |
| EAN/UPC - Case | 8720169157040 |

Dimensional drawing



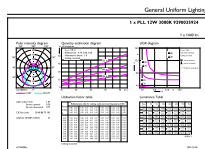
| Product | D1 | D2 | A1 | A2 | A3 |
|-------------------------------------|-------|--------|--------|--------|----|
| CorePro LED PLL EM/Mains 12W 830 4P | 17 mm | 250 mm | 312 mm | 319 mm | |

Photometric data



Spectral Power Distribution Colour

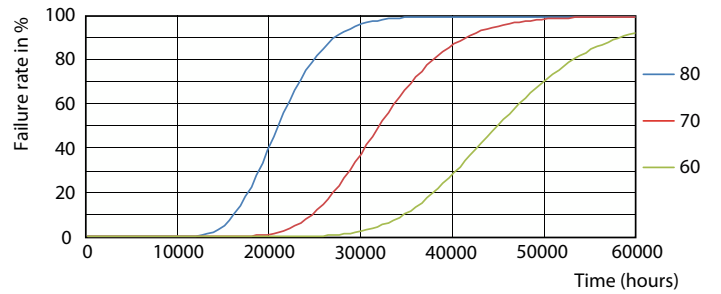
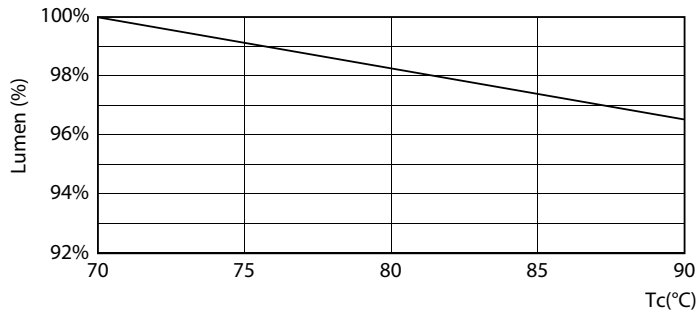
Light Distribution Diagram



General uniform lighting - CorePro LED PLL EM/Mains 12W 830 4P

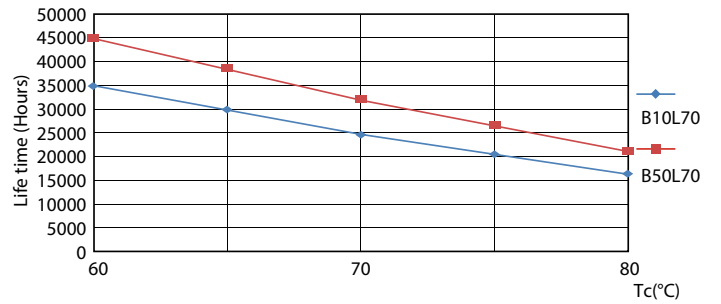
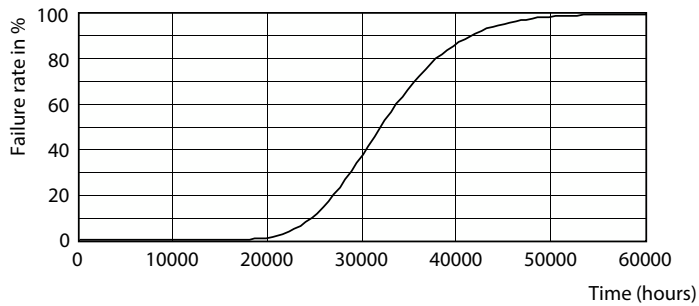
CorePro LED PLL

Lifetime



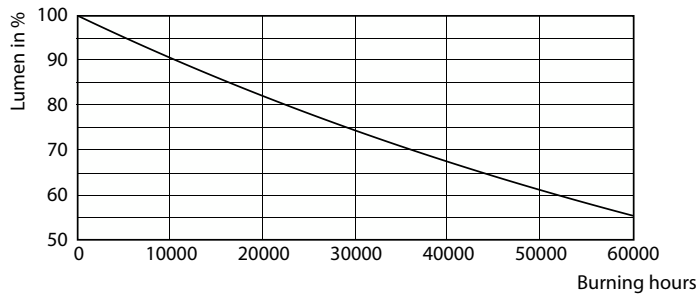
Lumen Maintenance Diagram

Life Expectancy Diagram



Life Expectancy Diagram - CorePro LED PLL EM/Mains 12W 830 4P

Life Expectancy Diagram



Lumen Maintenance Diagram - CorePro LED PLL EM/Mains 12W 830 4P

CorePro LED PLL

