



MASTER LEDtube InstantFit HF T8



MAS LEDtube HF 1200mm HO 14W840 T8

Philips MASTER LEDtube InstantFit T8 integrates a LED light source into a traditional fluorescent form factor. Its unique design creates a perfectly uniform visual appearance which cannot be distinguished from traditional fluorescent. Philips MASTER LEDtube InstantFit T8 is the ideal solution for customers who have higher light requirements and want to maximize value over lifetime. Full energy savings & longer lifetime result in attractive payback times and TCO benefits.

Warnings and Safety

- NOTES: The overall energy efficiency and light distribution of any installation that uses these lamps are determined by the design of the installation.

Product data

| General Information | |
|----------------------------|--|
| Cap-Base | G13 ROT (Rotating) [Medium Bi-Pin Fluorescent] |
| Nominal lifetime | 75,000 hour(s) |
| Switching Cycle | 50,000 |
| Lighting Technology | LED |
| Flux measurement reference | Sphere |

| Light Technical | |
|------------------------------------|--------------------|
| Color Code | 840 [CCT of 4000K] |
| Beam Angle (Nom) | 160 degree(s) |
| Luminous Flux | 2,100 lumen |
| Color Designation | Cool White (CW) |
| Correlated Color Temperature (Nom) | 4000 K |
| Luminous Efficacy (rated) (Nom) | 150 lm/W |

| | |
|---------------------------------------|------|
| Color Consistency | <6 |
| Color rendering index (CRI) | 80 |
| LLMF At End Of Nominal Lifetime (Nom) | 70 % |

| Operating and Electrical | |
|---------------------------|----------------|
| Line Frequency | 20000-75000 Hz |
| Input Frequency | 20000-75000 Hz |
| Power Consumption | 14 W |
| Starting Time (Nom) | 0.5 s |
| Warm-up time to 60% light | 0.5 s |
| Power Factor (Fraction) | 0.9 |
| Voltage (Nom) | 30-80 V |

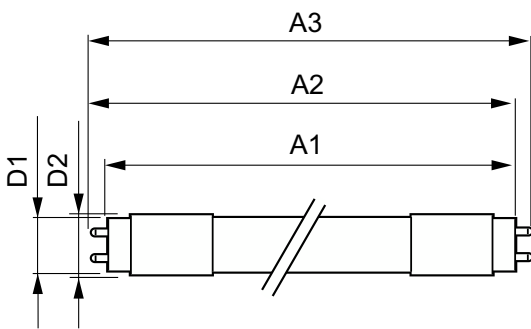
| Temperature | |
|---------------------------|-----------------|
| Ambient temperature range | -20 °C to 45 °C |

MASTER LEDtube InstantFit HF T8

| | |
|---------------------------------|--|
| T-Case Maximum (Nom) | 55 °C |
| Controls and Dimming | |
| Dimmable | Yes - Check ballast compatibility |
| Mechanical and Housing | |
| Bulb Finish | Frosted |
| Bulb Material | Plastic |
| Product Length | 1,200 mm |
| Bulb Shape | Tube, double-ended |
| Approval and Application | |
| Energy Efficiency Class | D |
| Energy Saving Product | Yes |
| Approval Marks | RoHS compliance TUV CE marking KEMA Keur certificate |

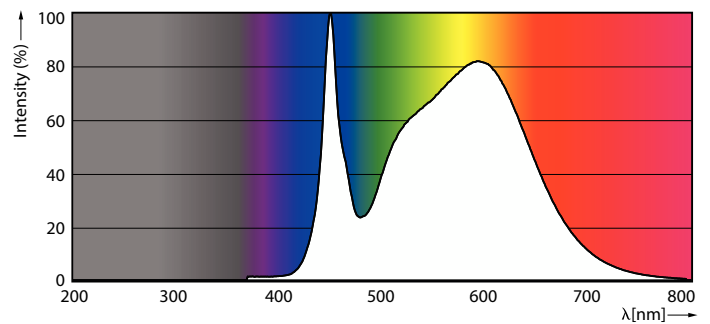
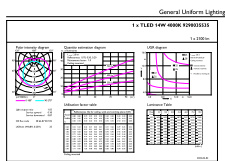
| | |
|---------------------------------|------------------------------------|
| Energy Consumption kWh/1000 h | 14 kWh |
| EPREL Registration Number | 1,165,509 |
| CE mark | Yes |
| EU RoHS compliant | Yes |
| Product Data | |
| Full product code | 871951446684500 |
| Order product name | MAS LEDtube HF 1200mm HO 14W840 T8 |
| Order code | 929003553502 |
| Numerator - Quantity Per Pack | 1 |
| Numerator - Packs per outer box | 20 |
| Material number (12NC) | 929003553502 |
| Full product name | MAS LEDtube HF 1200mm HO 14W840 T8 |
| EAN/UPC - Case | 8719514466852 |

Dimensional drawing



| Product | D1 | D2 | A1 | A2 | A3 |
|------------------------------------|---------|-------|------------|------------|------------|
| MAS LEDtube HF 1200mm HO 14W840 T8 | 25.8 mm | 28 mm | 1,198.2 mm | 1,205.3 mm | 1,212.4 mm |

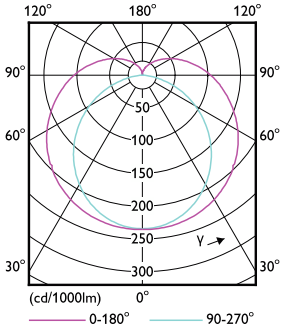
Photometric data



Spectral Power Distribution Colour - MAS LEDtube HF 1200mm HO 14W840 T8

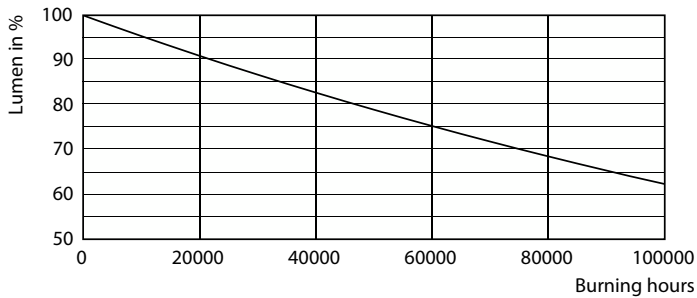
MASTER LEDtube InstantFit HF T8

Photometric data

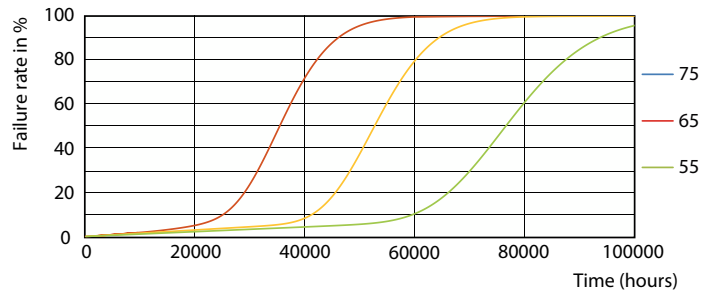


Light Distribution Diagram - MAS LEDtube HF 1200mm HO 14W840 T8

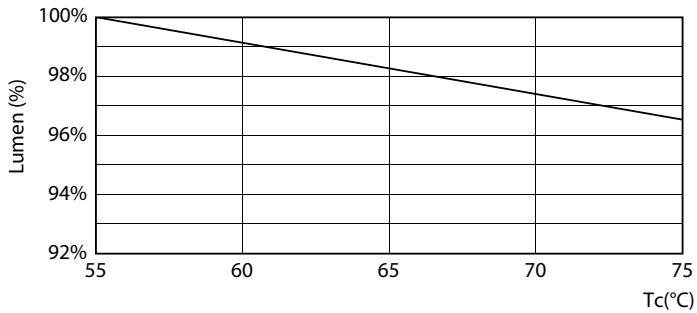
Lifetime



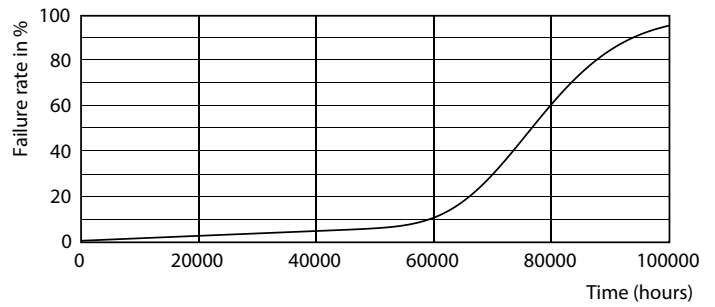
Lumen Maintenance Diagram - MAS LEDtube HF 1200mm HO 14W840 T8



Life Expectancy Diagram - MAS LEDtube HF 1200mm HO 14W840 T8



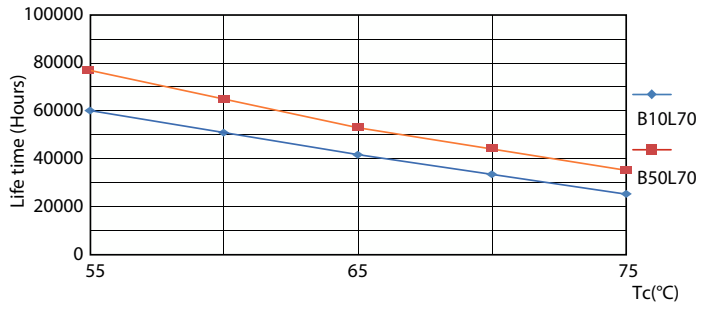
Lumen Maintenance Diagram - MAS LEDtube HF 1200mm HO 14W840 T8



Life Expectancy Diagram - MAS LEDtube HF 1200mm HO 14W840 T8

MASTER LEDtube InstantFit HF T8

Lifetime



Life Expectancy Diagram - MAS LEDtube HF 1200mm HO 14W840 T8

