

CorePro LEDtube EM/ Mains T8



CorePro LEDtube 1500mm UO 31.5W 865 T8

Philips CorePro LEDtubes are the quick and easy way to replace T8 fluorescent or other LED tubes with a fast pay back time. Not only does the Core range of LEDtubes require a low initial investment, but LED energy efficiency also delivers instant savings that you can bank on over a long and reliable lifetime. Plus, with the same lamp size and light distribution as fluorescent alternatives, you'll never know the difference. There are two ways to install these LED tubes: Rewire your existing fluorescent-based luminaires so the CorePro LEDtubes work directly on the Mains. Or simply change the fluorescent starter to an LED starter that can be used with your Electromagnetic ballasts.

Warnings and Safety

- NOTE: The overall energy efficiency and light distribution of any installation that uses these lamps will be determined by the design of the installation.
- Installation must be done according to the installation diagrams provided with the lamp or available online. Installation must be done by a certified professional.

Product data

General information		Luminous Flux (Nom)	
Cap-Base	G13 [Medium Bi-Pin Fluorescent]		3500 lm
EU RoHS compliant	Yes	Color Designation	Cool Daylight
Nominal Lifetime (Nom)	30000 h	Correlated Color Temperature (Nom)	6500 K
Switching Cycle	200000X	Luminous Efficacy (rated) (Nom)	111.00 lm/W
Flux measurement reference	Sphere	Color Consistency	<6
		Color Rendering Index (Nom)	80
		LLMF At End Of Nominal Lifetime (Nom)	70 %
Light technical		Operating and electrical	
Color Code	865 [CCT of 6500K]	Input Frequency	50 to 60 Hz
Beam Angle (Nom)	240 °		

CorePro LEDtube EM/Mains T8

Power (Nom)	31.5 W
Lamp Current (Max)	135 mA
Lamp Current (Min)	135 mA
Starting Time (Nom)	0.5 s
Warm Up Time to 60% Light (Nom)	0.5 s
Power Factor (Nom)	0.9
Voltage (Nom)	220-240 V

Temperature

T-Ambient (Max)	45 °C
T-Ambient (Min)	-20 °C
T-Storage (Max)	65 °C
T-Storage (Min)	-40 °C
T-Case Maximum (Nom)	58 °C

Controls and dimming

Dimmable	No
----------	----

Mechanical and housing

Bulb Finish	Frosted
Bulb Material	Glass
Product Length	1500 mm

Bulb Shape	Tube, double-ended
------------	--------------------

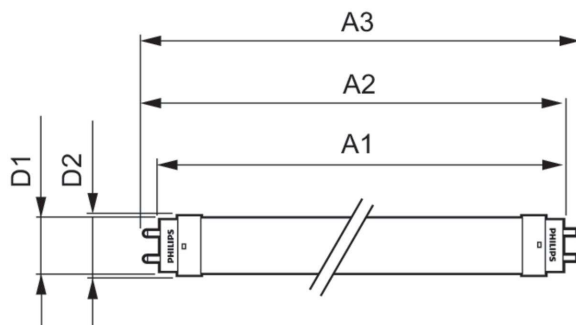
Approval and application

Energy Efficiency Class	E
Energy Saving Product	Yes
Approval Marks	RoHS compliance CE marking KEMA Keur certificate
Energy Consumption kWh/1000 h	32 kWh
EPREL Registration Number	1037555

Product data

Full product code	871951441903200
Order product name	CorePro LEDtube 1500mm UO 31.5W 865 T8
EAN/UPC - Product	8719514419032
Order code	929003154502
Numerator - Quantity Per Pack	1
Numerator - Packs per outer box	20
Material Nr. (12NC)	929003154502
Net Weight (Piece)	0.216 kg

Dimensional drawing

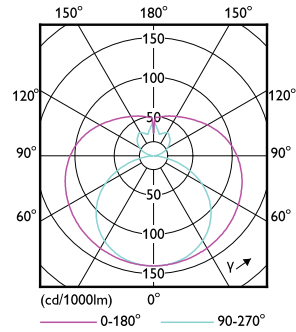
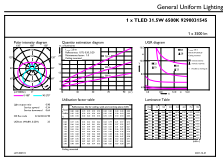


CorePro LEDtube 1500mm UO 31.5W 865 T8

Product	D1	D2	A1	A2	A3
CorePro LEDtube 1500mm UO 31.5W 865 T8	25.7 mm	28 mm	1500 mm	1507.1 mm	1514.2 mm

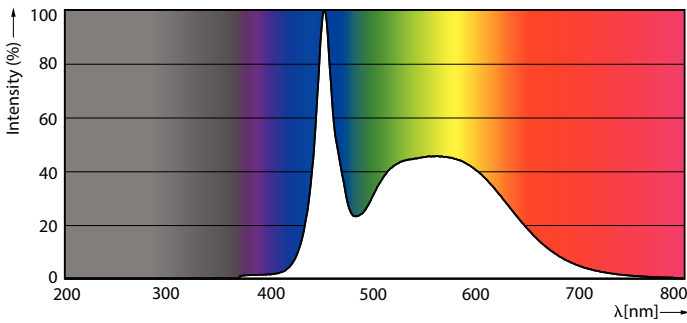
CorePro LEDtube EM/Mains T8

Photometric data



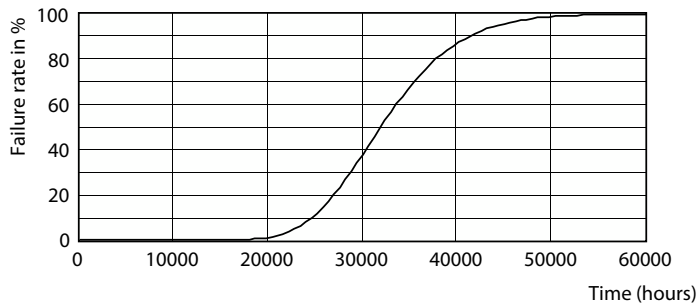
General uniform lighting

Light Distribution Diagram

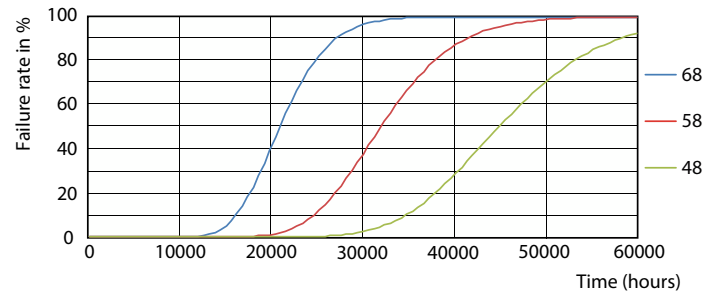


Spectral Power Distribution Colour

Lifetime



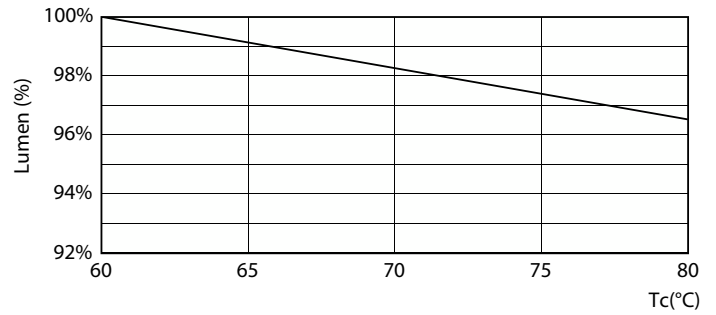
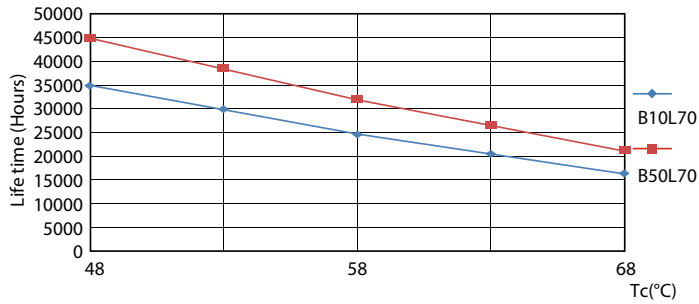
Life Expectancy Diagram



LEDtube 30K 4868 FailureRate-LED

CorePro LEDtube EM/Mains T8

Lifetime



LEDtube 30K 4868 LifetimeVsTc-LED

LEDtube COR EU 31,5W 30K LumenVsTc-LMP



Lumen Maintenance Diagram

