



# MASTER Value LEDtube Universal T8

## MAS LEDtube VLE UN 1200mm UO 15.5W840 T8

The new Philips MASTER Value LEDtube Universal T8 brings ease and simplicity to your lighting project. That's because you do not need to match the driver technology anymore: a unique design enables the Philips MASTER Value LEDtube Universal T8 to directly fit in luminaires operating on either electromagnetic ballasts or HF electronic ballasts or mains power connection. It is so simple to operate and you no longer need to stock two types of tubes! Perfectly safe, reliable & easy to install Philips MASTER Value LEDtube Universal T8 is the ideal alternative to standard fluorescent tubes to maximize value over lifetime with high energy saving and lower maintenance costs.

### Product data

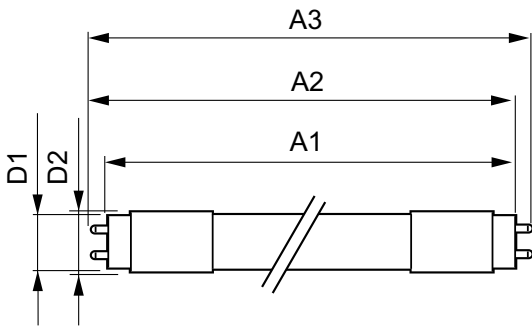
General Information		Luminous Efficacy (rated) (Nom)	
Cap-Base	G13 [Medium Bi-Pin Fluorescent]		161 lm/W
CE mark	Yes	Color Consistency	<6
EU RoHS compliant	Yes	Color rendering index (CRI)	80
Nominal lifetime	60,000 hour(s)	LLMF At End Of Nominal Lifetime (Nom)	70 %
Switching Cycle	50,000	<b>Operating and Electrical</b>	
Lighting Technology	LED	Line Frequency	50 to 60 Hz
Flux measurement reference	Sphere	Input Frequency	50 to 60 Hz
Brand	Philips	Power Consumption	15.5 W
<b>Light Technical</b>		Lamp Current (Nom)	75 mA
Color Code	840 [CCT of 4000K]	Starting Time (Nom)	0.5 s
Beam Angle (Nom)	190 degree(s)	Warm-up time to 60% light	0.5 s
Luminous Flux	2,500 lumen	Power Factor (Fraction)	0.9
Color Designation	Cool White (CW)	Voltage (Nom)	220-240 V
Correlated Color Temperature (Nom)	4000 K		

# MASTER Value LEDtube Universal T8

Temperature	
Ambient temperature range	-20 °C to 45 °C
T-Case Maximum (Nom)	55 °C
Controls and Dimming	
Dimmable	No
Mechanical and Housing	
Bulb Finish	Frosted
Bulb Material	Glass
Product Length	1,200 mm
Bulb Shape	Tube, double-ended
Approval and Application	
Energy Saving Product	Yes
Approval Marks	RoHS compliance TUV CE marking KEMA Keur certificate

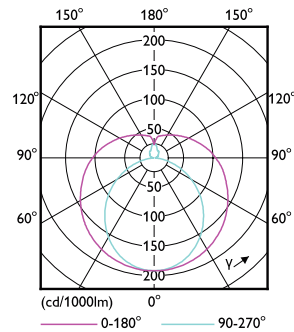
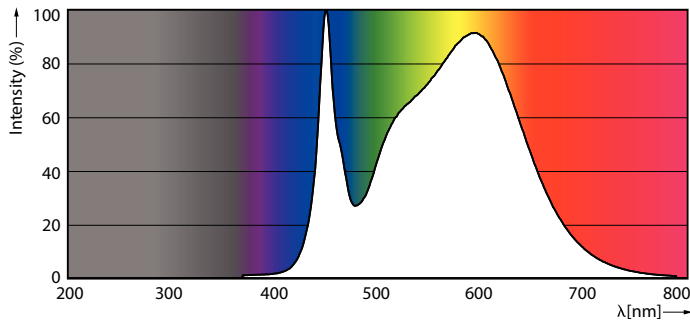
Energy Consumption kWh/1000 h	16 kWh
EPREL Registration Number	403,659
Product Data	
Full product code	871951431670600
Order product name	MAS LEDtube VLE UN 1200mm UO 15.5W840 T8
Order code	929002997102
Numerator - Quantity Per Pack	1
Numerator - Packs per outer box	10
Material number (12NC)	929002997102
Net weight	0.215 kg
Full product name	MAS LEDtube VLE UN 1200mm UO 15.5W840 T8
EAN/UPC - Case	8719514316713

## Dimensional drawing



Product	D1	D2	A1	A2	A3
MAS LEDtube VLE UN 1200mm UO 15.5W840 T8	26 mm	28 mm	1,199 mm	1,205 mm	1,213 mm

## Photometric data

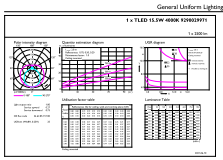


Spectral Power Distribution Colour - MAS LEDtube VLE UN 1200mm UO 15.5W840 T8

Light Distribution Diagram - MAS LEDtube VLE UN 1200mm UO 15.5W840 T8

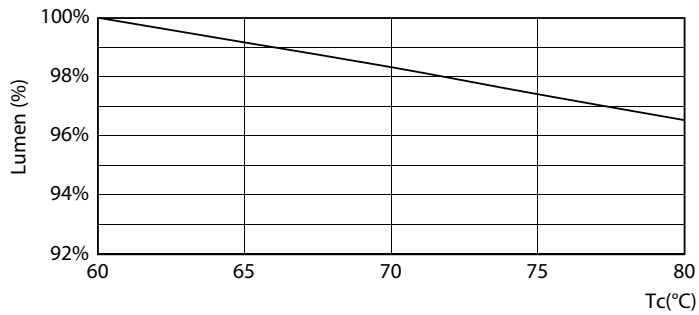
# MASTER Value LEDtube Universal T8

## Photometric data

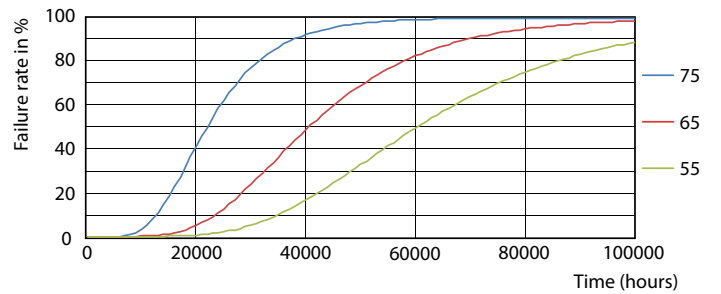


© 2023 Philips Lighting B.V. Page 11

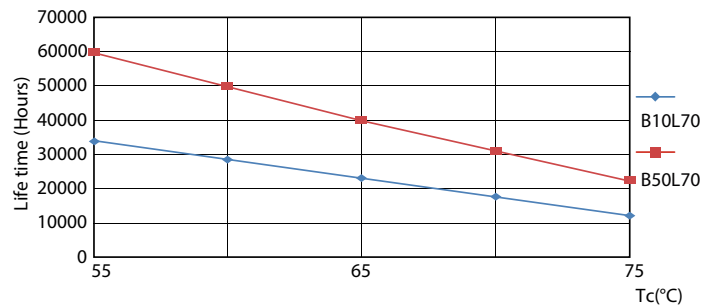
## Lifetime



Lumen Maintenance Diagram - MAS LEDtube VLE UN 1200mm UO 15.5W840 T8



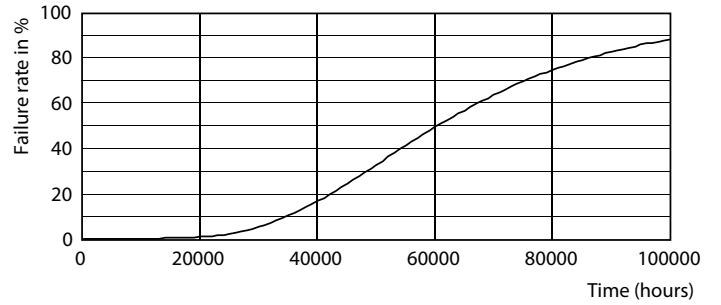
Life Expectancy Diagram - MAS LEDtube VLE UN 1200mm UO 15.5W840 T8



Life Expectancy Diagram - MAS LEDtube VLE UN 1200mm UO 15.5W840 T8

# MASTER Value LEDtube Universal T8

## Lifetime



Lumen Maintenance Diagram - MAS LEDtube VLE UN 1200mm UO 15.5W840 T8

Life Expectancy Diagram - MAS LEDtube VLE UN 1200mm UO 15.5W840 T8

