



MASTER LEDtube InstantFit HF T5

Master LEDtube HF 1200mm HO 26W 865 T5 OE

The Philips MASTER LEDtube integrates an LED light source into a traditional fluorescent form factor. Its unique design creates a perfectly uniform visual appearance, which cannot be distinguished from traditional fluorescents. These T5 lighting tubes are the right choice for absolute performance and are designed to stand up to everyday conditions. Unparalleled savings, thanks to low energy consumption and an exceptionally long lifetime, make these T5 LED tubes the choice for every demanding applications.

Product data

General information		Operating and electrical	
Cap base	G5 [G5]	Line Frequency	30K to 60K Hz
Nominal lifetime	60,000 h	Input frequency	30 K to 60 K Hz
Switching Cycle	50,000	Power Consumption	26 W
Lighting Technology	LED	Starting time (nom.)	0.5 s
Flux measurement reference	Sphere	Warm-up time to 60% light	0.5 s
		Power Factor (Fraction)	0.9
		Voltage (nom.)	20-90 V
Light technical		Temperature	
Colour Code	865 [CCT of 6500K]	T-Case maximum (nom.)	55 °C
Beam angle (nom.)	200 degree(s)		
Luminous Flux	3,900 lm	Controls and dimming	
Colour designation	Cool Daylight	Dimmable	Yes – Check ballast compatibility
Correlated Colour Temperature	6500 K		
Luminous Efficacy (rated) (Nom)	150 lm/W	Mechanical and housing	
Colour consistency	<6	Lamp Finish	Frosted
Colour rendering index (CRI)	80	Bulb material	Glass
LLMF at end of nominal lifetime (nom.)	70 %		

MASTER LEDtube InstantFit HF T5

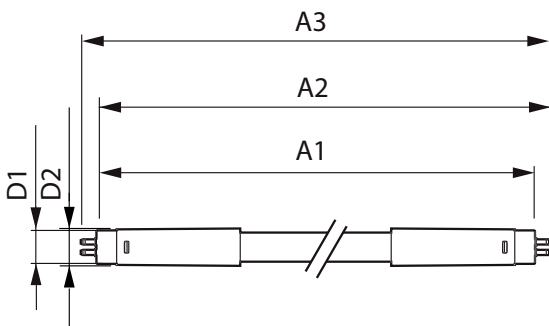
Product length	1,200 mm
Bulb shape	Tube, double-ended
Approval and application	
Energy-saving product	Yes
Approval marks	RoHS compliance TUV CE marking KEMA Keur certificate
Energy consumption kWh/1,000 hours	26 kWh
EPREL registration number	1,384,142
CE mark	Yes
EU RoHS compliant	Yes

Product data

Full EOC	871869974955200
----------	-----------------

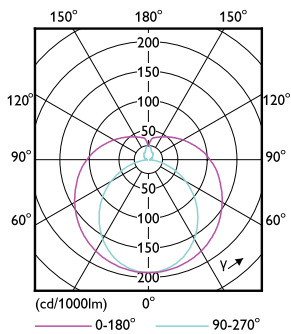
Order product name	MAS LEDtube HF 1200mm HO 26W 865 T5 OE
Order code	74955200
SAP numerator – quantity per pack	1
Numerator – packs per outer box	10
Material number (12NC)	929002352202
Net weight	0.160 kg
Full product name	Master LEDtube HF 1200mm HO 26W 865 T5 OE
EAN/UPC – Case	8718699749569

Dimensional drawing

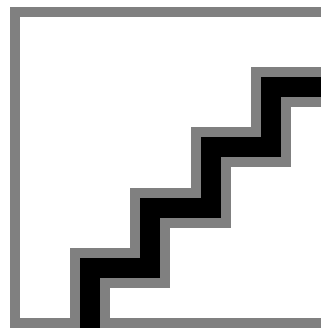


Product	D1	D2	A1	A2	A3
MAS LEDtube HF 1200mm HO 26W 865 T5 OE	15.5 mm	19 mm	1,149 mm	1,156 mm	1,163 mm

Photometric data



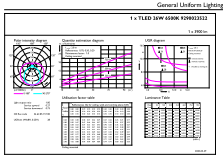
Light Distribution Diagram - MAS LEDtube HF 1200mm HO 26W 865 T5 OE



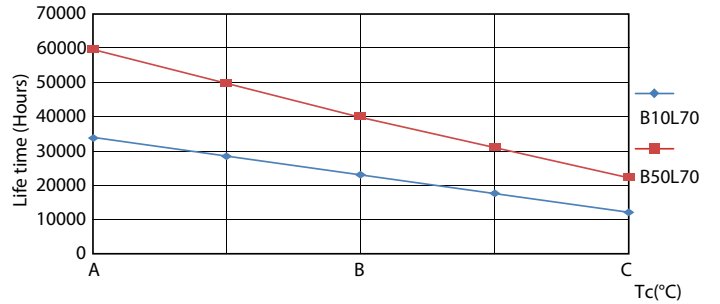
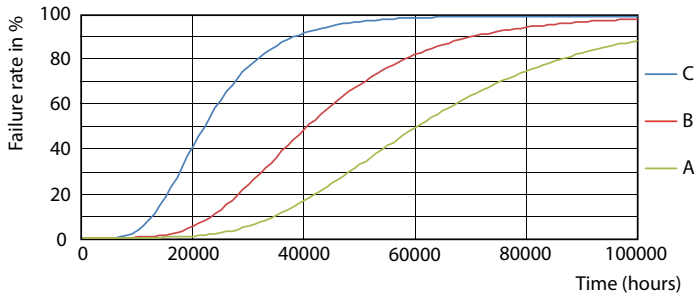
Spectral Power Distribution Colour - MAS LEDtube HF 1200mm HO 26W 865 T5 OE

MASTER LEDtube InstantFit HF T5

Photometric data

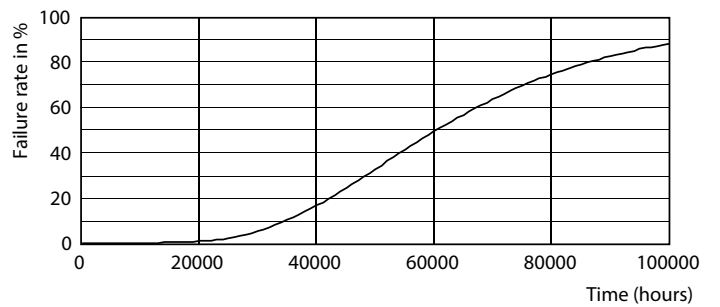
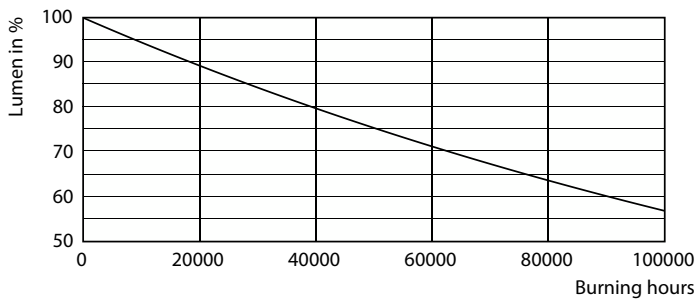


Lifetime



Life Expectancy Diagram - MAS LEDtube HF 1200mm HO 26W 865 T5 OE

Life Expectancy Diagram - MAS LEDtube HF 1200mm HO 26W 865 T5 OE

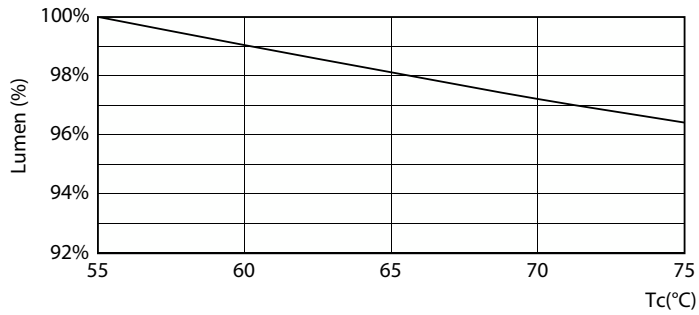


Lumen Maintenance Diagram - MAS LEDtube HF 1200mm HO 26W 865 T5 OE

Life Expectancy Diagram - MAS LEDtube HF 1200mm HO 26W 865 T5 OE

MASTER LEDtube InstantFit HF T5

Lifetime



Lumen Maintenance Diagram - MAS LEDtube HF 1200mm HO 26W 865 T5
OE

