



# MASTER LEDtube InstantFit HF T5

## Master LEDtube HF 1200mm HO 26W 830 T5 OE

The Philips MASTER LEDtube integrates an LED light source into a traditional fluorescent form factor. Its unique design creates a perfectly uniform visual appearance, which cannot be distinguished from traditional fluorescents. These T5 lighting tubes are the right choice for absolute performance and are designed to stand up to everyday conditions. Unparalleled savings, thanks to low energy consumption and an exceptionally long lifetime, make these T5 LED tubes the choice for every demanding applications.

### Product data

General information	
Cap base	G5 [G5]
Nominal lifetime	60,000 h
Switching Cycle	50,000
Lighting Technology	LED
Flux measurement reference	Sphere

Light technical	
Colour Code	830 [CCT of 3000K]
Beam angle (nom.)	200 degree(s)
Luminous Flux	3,700 lm
Colour designation	White (WH)
Correlated Colour Temperature	3000 K
Luminous Efficacy (rated) (Nom)	142.00 lm/W
Colour consistency	<6
Colour rendering index (CRI)	80
LLMF at end of nominal lifetime (nom.)	70 %

Operating and electrical	
Line Frequency	30K to 60K Hz
Input frequency	30 K to 60 K Hz
Power Consumption	26 W
Starting time (nom.)	0.5 s
Warm-up time to 60% light	0.5 s
Power Factor (Fraction)	0.9
Voltage (nom.)	20-90 V

Temperature	
T-Case maximum (nom.)	55 °C

Controls and dimming	
Dimmable	Yes – Check ballast compatibility

Mechanical and housing	
Lamp Finish	Frosted
Bulb material	Glass

# MASTER LEDtube InstantFit HF T5

Product length	1,200 mm
Bulb shape	Tube, double-ended

## Approval and application

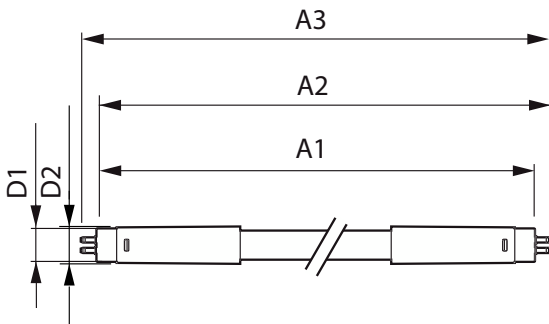
Energy-saving product	Yes
Approval marks	RoHS compliance TUV CE marking KEMA Keur certificate
Energy consumption kWh/1,000 hours	26 kWh
EPREL registration number	1,384,140
CE mark	Yes
EU RoHS compliant	Yes

## Product data

Full EOC	871869974951400
----------	-----------------

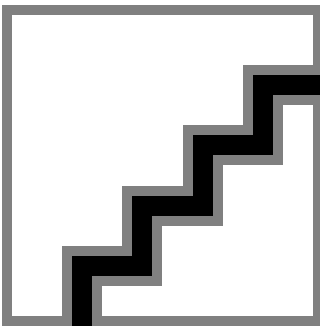
Order product name	MAS LEDtube HF 1200mm HO 26W 830 T5 OE
Order code	74951400
SAP numerator – quantity per pack	1
Numerator – packs per outer box	10
Material number (12NC)	929002352002
Net weight	0.160 kg
Full product name	Master LEDtube HF 1200mm HO 26W 830 T5 OE
EAN/UPC – Case	8718699749521

## Dimensional drawing

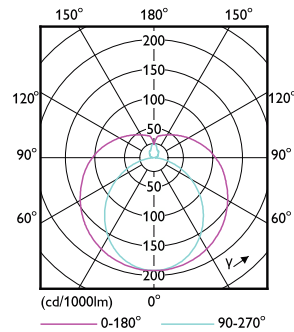


Product	D1	D2	A1	A2	A3
MAS LEDtube HF 1200mm HO 26W 830 T5 OE	15.5 mm	19 mm	1,149 mm	1,156 mm	1,163 mm

## Photometric data



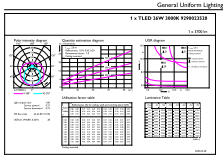
Spectral Power Distribution Colour - MAS LEDtube HF 1200mm HO 26W 830 T5 OE



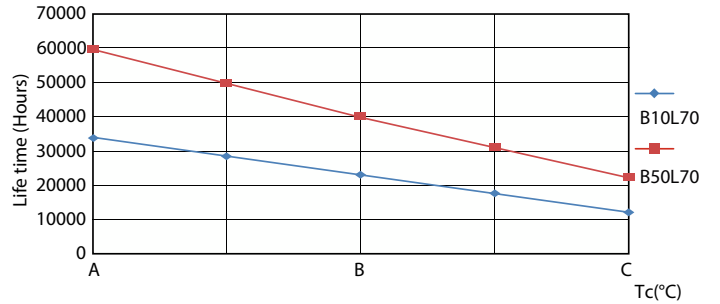
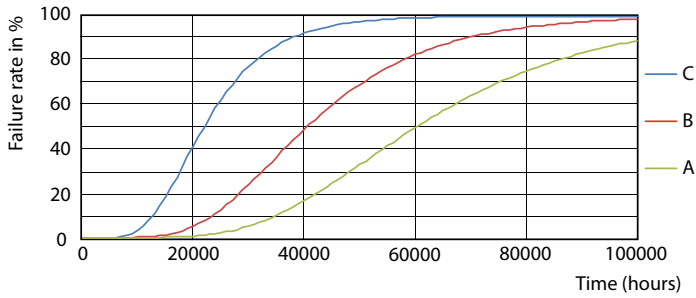
Light Distribution Diagram - MAS LEDtube HF 1200mm HO 26W 830 T5 OE

# MASTER LEDtube InstantFit HF T5

## Photometric data

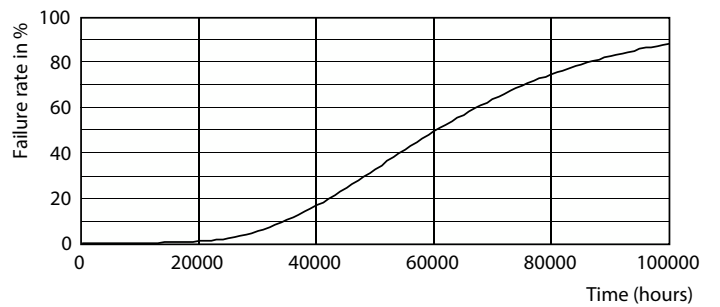
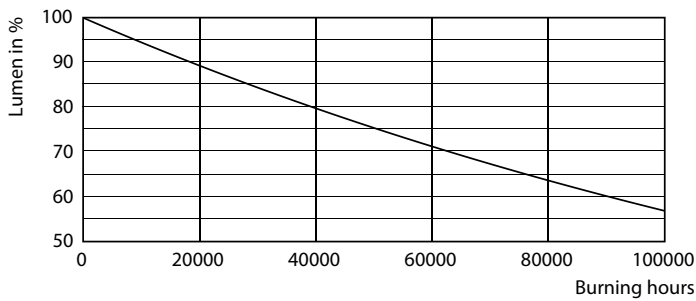


## Lifetime



Life Expectancy Diagram - MAS LEDtube HF 1200mm HO 26W 830 T5 OE

Life Expectancy Diagram - MAS LEDtube HF 1200mm HO 26W 830 T5 OE

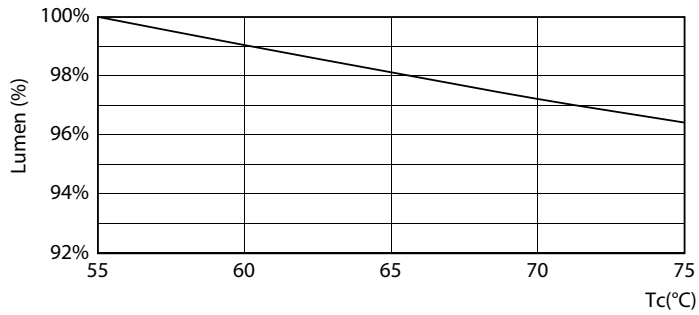


Lumen Maintenance Diagram - MAS LEDtube HF 1200mm HO 26W 830 T5 OE

Life Expectancy Diagram - MAS LEDtube HF 1200mm HO 26W 830 T5 OE

# MASTER LEDtube InstantFit HF T5

## Lifetime



Lumen Maintenance Diagram - MAS LEDtube HF 1200mm HO 26W 830 T5  
OE

