



MASTER LEDtube Mains T5

MASTER LEDtube 1200mm HO 26W 865 T5

The new Philips Master LEDtube Mains T5 brings simplicity to your lighting project. You don't need to pay attention to the driver technology anymore. Thanks to a unique design, Philips MASTER LEDtube Mains T5 installs in luminaires operating on mains power connection. So simple to operate! . Perfectly safe, reliable & easy to install, the Philips MASTER LEDtube Mains T5 is the ideal alternative to standard fluorescent tubes to maximise value over lifetime with high energy savings and lower maintenance costs.

Product data

General information	
Cap base	G5 [G5]
CE mark	Yes
EU RoHS compliant	Yes
Nominal lifetime	50,000 h
Switching Cycle	200,000
Lighting Technology	LED
Flux measurement reference	Sphere

Light technical	
Colour Code	865 [CCT of 6500K]
Beam angle (nom.)	200 degree(s)
Luminous Flux	3,900 lm
Colour designation	Cool Daylight
Correlated Colour Temperature	6500 K
Luminous Efficacy (rated) (Nom)	150 lm/W
Colour consistency	<6
Colour rendering index (CRI)	80

LLMF at end of nominal lifetime (nom.) 70 %	
---	--

Operating and electrical	
Line Frequency	50 to 60 Hz
Input frequency	50 to 60 Hz
Power Consumption	26 W
Lamp current (nom.)	125 mA
Starting time (nom.)	0.5 s
Warm-up time to 60% light	0.5 s
Power Factor (Fraction)	0.92
Voltage (nom.)	220-240 V

Temperature	
T-Case maximum (nom.)	70 °C

Controls and dimming	
Dimmable	No

MASTER LEDtube Mains T5

Mechanical and housing

Lamp Finish	Frosted
Bulb material	Glass
Product length	1,200 mm
Bulb shape	Tube, double-ended

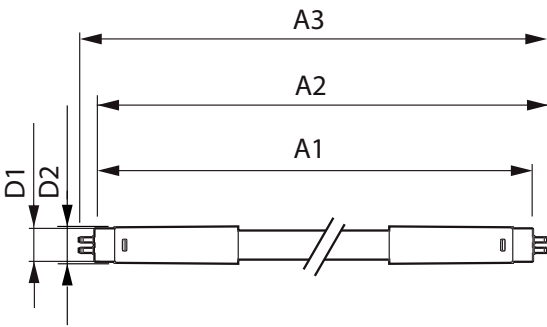
Approval and application

Energy-saving product	Yes
Approval marks	RoHS compliance CE marking KEMA Keur certificate
Energy consumption kWh/1,000 hours	26 kWh
EPREL registration number	652,787

Product data

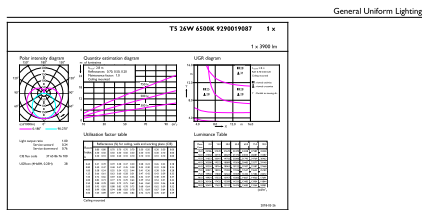
Full EOC	871869681925800
Order product name	MAS LEDtube 1200mm HO 26W 865 T5
Order code	81925800
SAP numerator – quantity per pack	1
Numerator – packs per outer box	10
Material number (12NC)	929001908702
Net weight	0.215 kg
Full product name	MASTER LEDtube 1200mm HO 26W 865 T5
EAN/UPC - Case	8718696819265

Dimensional drawing

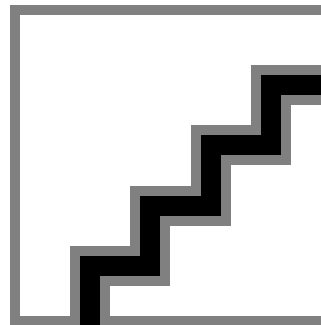


Product	D1	D2	A1	A2	A3
MAS LEDtube 1200mm HO 26W 865 T5	15 mm	16.9 mm	1,149 mm	1,156.1 mm	1,163.2 mm

Photometric data



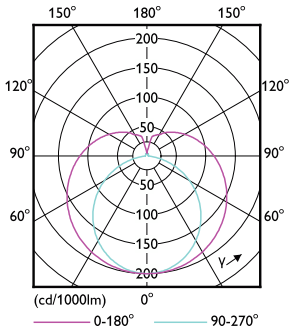
Philips Lighting B.V. Page 1/7



Spectral Power Distribution Colour - MAS LEDtube 1200mm HO 26W 865 T5

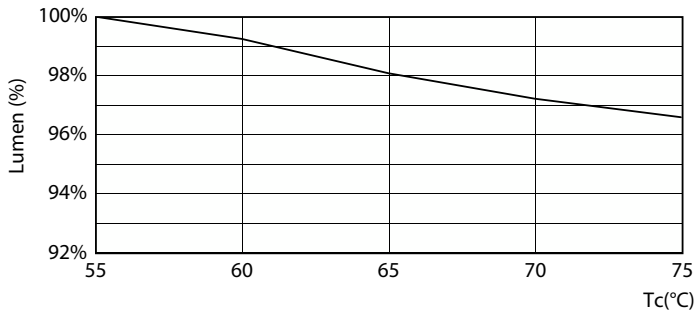
MASTER LEDtube Mains T5

Photometric data

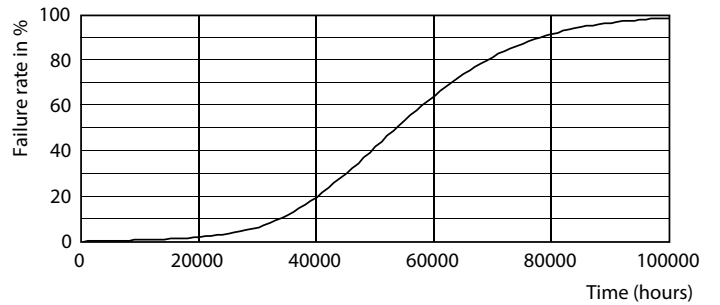


Light Distribution Diagram - MAS LEDtube 1200mm HO 26W 865 T5

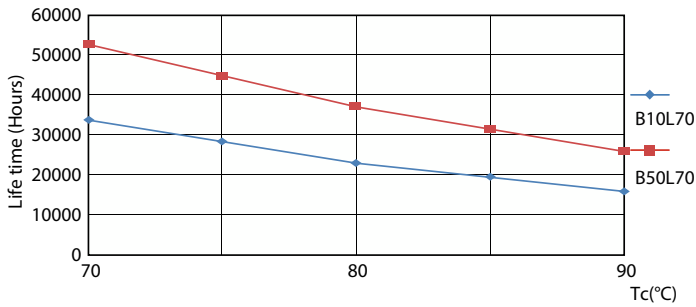
Lifetime



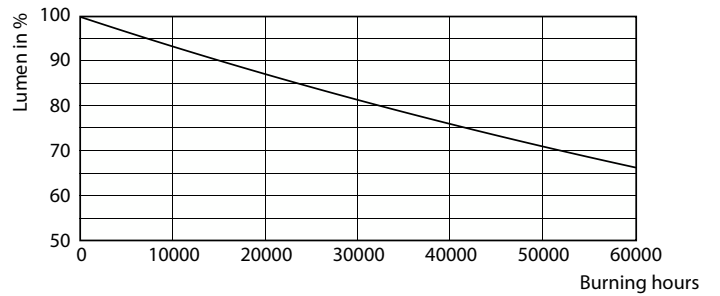
Lumen Maintenance Diagram - MAS LEDtube 1200mm HO 26W 865 T5



Life Expectancy Diagram - MAS LEDtube 1200mm HO 26W 865 T5



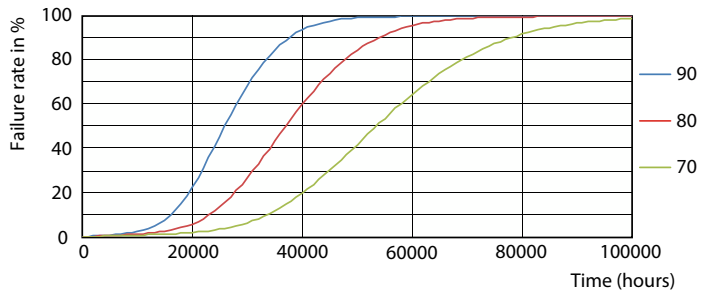
Life Expectancy Diagram - MAS LEDtube 1200mm HO 26W 865 T5



Lumen Maintenance Diagram - MAS LEDtube 1200mm HO 26W 865 T5

MASTER LEDtube Mains T5

Lifetime



Life Expectancy Diagram - MAS LEDtube 1200mm HO 26W 865 T5

