



MASTER LEDtube InstantFit HF T5

Master LEDtube HF 1200mm HE 16.5W 830 T5

The Philips MASTER LEDtube integrates an LED light source into a traditional fluorescent form factor. Its unique design creates a perfectly uniform visual appearance, which cannot be distinguished from traditional fluorescents. These T5 lighting tubes are the right choice for absolute performance and are designed to stand up to everyday conditions. Unparalleled savings, thanks to low energy consumption and an exceptionally long lifetime, make these T5 LED tubes the choice for every demanding applications.

Product data

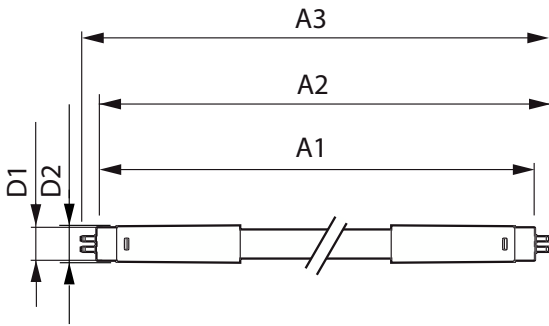
General information		Operating and electrical	
Cap base	G5 [G5]	Line Frequency	30K to 100K Hz
Nominal lifetime	60,000 h	Input frequency	30 K to 100 K Hz
Switching Cycle	50,000	Power Consumption	16.5 W
Lighting Technology	LED	Starting time (nom.)	0.5 s
Flux measurement reference	Sphere	Warm-up time to 60% light	0.5 s
Light technical		Power Factor (Fraction)	0.92
Colour Code	830 [CCT of 3000K]	Voltage (nom.)	70-120 V
Beam angle (nom.)	200 degree(s)	Temperature	
Luminous Flux	2,300 lm	T-Case maximum (nom.)	65 °C
Colour designation	White (WH)	Controls and dimming	
Correlated Colour Temperature	3000 K	Dimmable	Yes – Check ballast compatibility
Luminous Efficacy (rated) (Nom)	139.00 lm/W	Mechanical and housing	
Colour consistency	<6	Lamp Finish	Frosted
Colour rendering index (CRI)	80	Bulb material	Glass
LLMF at end of nominal lifetime (nom.)	70 %		

MASTER LEDtube InstantFit HF T5

Product length	1,200 mm
Bulb shape	Tube, double-ended
Approval and application	
Energy-saving product	Yes
Approval marks	RoHS compliance TUV CE marking KEMA Keur certificate
Energy consumption kWh/1,000 hours	17 kWh
EPREL registration number	1,384,134
CE mark	Yes
EU RoHS compliant	Yes

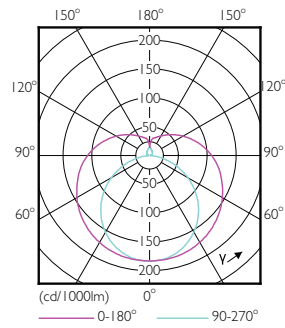
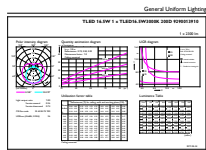
Product data	
Full EOC	871869674329400
Order product name	MAS LEDtube HF 1200mm HE 16.5W 830 T5
Order code	74329400
SAP numerator – quantity per pack	1
Numerator – packs per outer box	10
Material number (12NC)	929001391002
Net weight	0.160 kg
Full product name	Master LEDtube HF 1200mm HE 16.5W 830 T5
EAN/UPC – Case	8718696743300

Dimensional drawing



Product	D1	D2	A1	A2	A3
MAS LEDtube HF 1200mm HE 16.5W 830 T5	15.5 mm	18.8 mm	1,149 mm	1,156.1 mm	1,163.2 mm

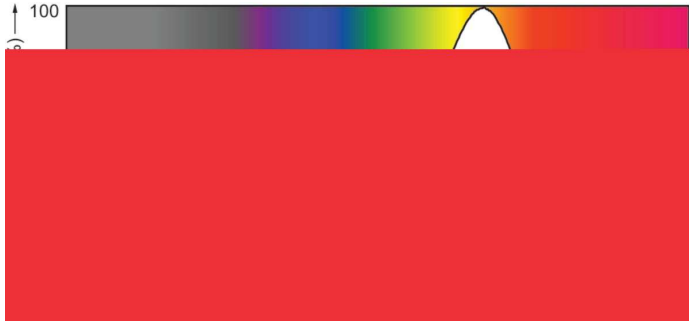
Photometric data



Light Distribution Diagram - MAS LEDtube HF 1200mm HE 16.5W 830 T5

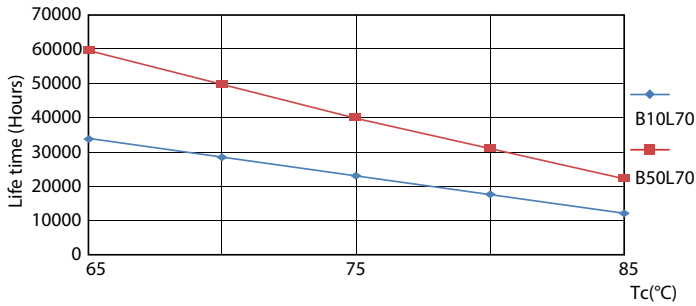
MASTER LEDtube InstantFit HF T5

Photometric data

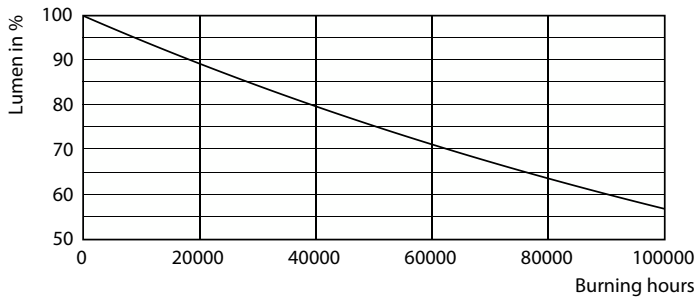


Spectral Power Distribution Colour - MAS LEDtube HF 1200mm HE 16.5W 830 T5

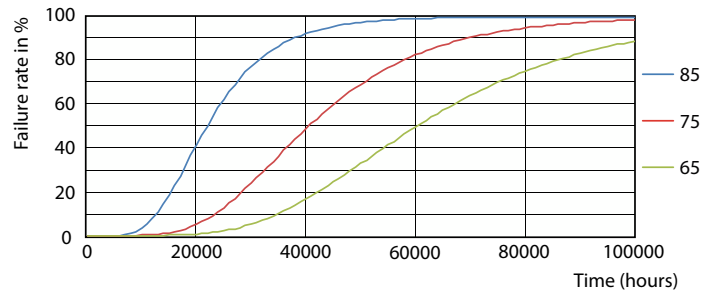
Lifetime



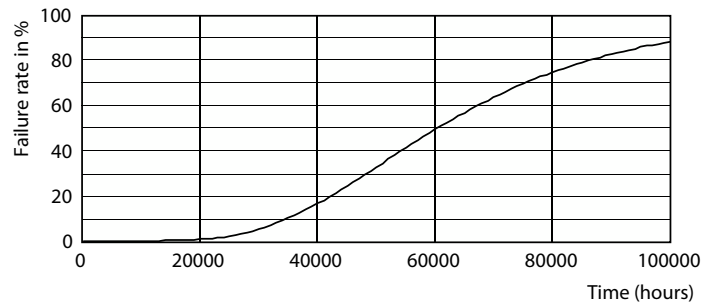
Life Expectancy Diagram - MAS LEDtube HF 1200mm HE 16.5W 830 T5



Lumen Maintenance Diagram - MAS LEDtube HF 1200mm HE 16.5W 830 T5



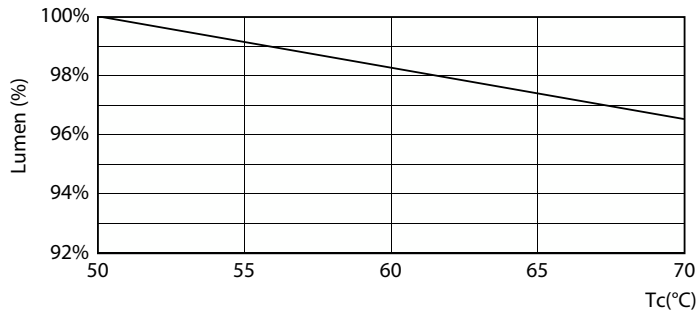
Life Expectancy Diagram - MAS LEDtube HF 1200mm HE 16.5W 830 T5



Life Expectancy Diagram - MAS LEDtube HF 1200mm HE 16.5W 830 T5

MASTER LEDtube InstantFit HF T5

Lifetime



Lumen Maintenance Diagram - MAS LEDtube HF 1200mm HE 16.5W 830 T5

